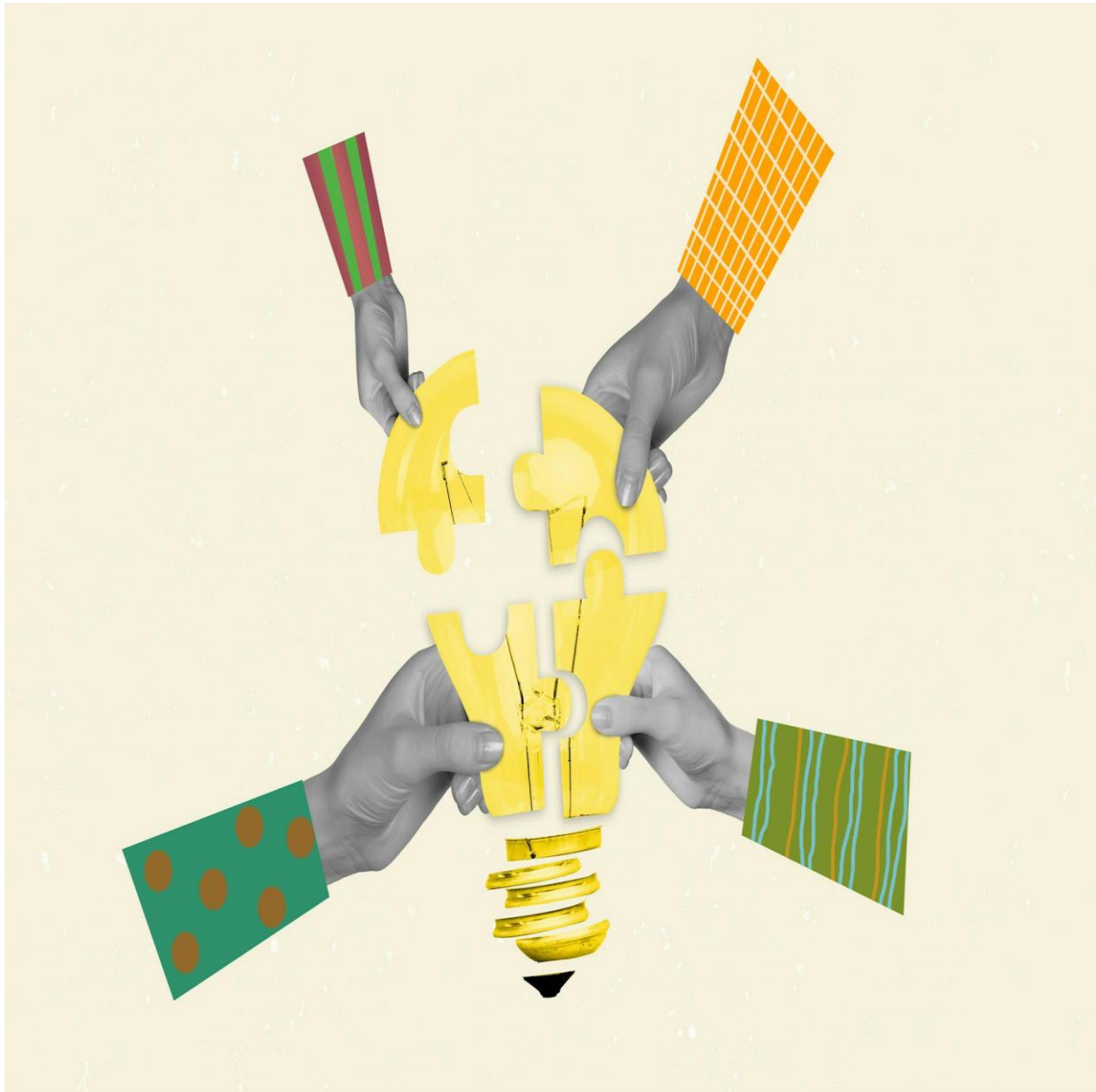


Structure Diagrams - Head-to-Head Analysis

Published on 2024-06-12 by

Legaltech Hub



In the Head-to-Head series, we look at discrete pain-points in legal workflows and examine how practitioners might go about solving these using technology.

At the outset of a corporate transaction, and throughout it, there are multiple reasons why legal professionals may seek to create a structure diagram. Some of these include:

- Getting to know a new client, in order to provide better legal advice
- To more fully understand a target organization's structure and shareholdings
- To depict to a client how their corporate structure will change during the course of a transaction
- To manage entities with improved transparency

- To understand where compliance risk may arise across shareholdings as a result of a restructure
- For tax lawyers, to illustrate shareholdings in various jurisdictions and to be able to more clearly see – and demonstrate – where tax liability falls.

Structure diagramming is a category that emerged in 2018-2019, as a discrete area of legal technology developed to address these specific pain-points. The solutions operating in this space automate the creation of structure diagrams and other diagrams that depict the relationship of entities to one another or the steps involved in a process. Previously, lawyers have often used PowerPoint to create these types of structures, but as PowerPoint is not fit-for-purpose for this type of work, it can take three or more hours in order to generate a corporate structure in the platform (and considerably longer for more complicated structures). For diagrams such as organizational charts, Visio is another tool that has commonly been used – but even Visio is arduous to use when creating larger flowcharts or diagrams.

In contrast to these traditional tools, legal structure diagramming solutions allow for flexible customization and one-click creation of entities, with the ability to add data that sits behind both the entities themselves and the connections or relationships between them. For example, the jurisdiction within which an entity sits, or the percentage shareholding a parent company has in a subsidiary. As the importance of data continues to grow, and with the advent of advanced generative AI, these solutions are becoming closer to being broad visual data analytics tools.

Once launched into market, these solutions have found a place beyond transactional practices, with law firms discovering that this type of automation is also useful to investigations groups, litigators and arbitrators, compliance professionals and more. On the corporate legal side, diagramming provides a type of visual data analysis that allows for greater transparency across complex shareholdings or entities.

As a discrete and relatively new category, there are not many vendors in the space. Some of these have been developed to specifically support only one or two practices, others are broad solutions, and one specifically caters to corporates.

See below our LTH head-to-head comparison of the core products in this category.

LTH Head-to-Head – Structure Diagrams				
	Jigsaw	StructureFlow	Blue J Diagramming	Group View
Background	Jigsaw was founded in 2019 by experienced founders Stephen Scanlan and Travis Leon. The company has raised over £20M, with £12M in funding in a Series A round raised in April 2024. Investors include Morgan Stanley and Exor Ventures.	StructureFlow was founded in 2018 by Tim Follett, who is well known and respected in the legal industry. It has raised \$9.5M over two funding rounds, most recently a Series A on May 30, 2024 for \$6m from investors Venrex and FINTOP Capital.	Blue J was founded in 2015 by Benjamin Alarie, Brett Janssen, Albert Yoon, and Anthony Niblett, though the Diagramming product emerged later, in 2020. It has raised a total of \$18M funding over three rounds, most recently a Series B on August 11, 2021 for \$9M with Generation Ventures as the main investor.	Group View was launched as a separate product in 2023 by parent company Askival Systems. Askival Systems was founded in 1986. The company is owned and financed by its founder.
HQ	UK	UK	Canada	Netherlands
Regions Served	Global, with customers in UK, Europe, Australia, USA, Canada & Asia.	Global, with customers in the UK, Europe, USA, Canada and Australia	USA, Canada	Europe, UK
Description	Jigsaw is one of the original automated structure diagramming tools developed for the legal industry. It was created by a team of lawyers from Linklaters, Simmons & Simmons, and Akin Gump, who previously founded the legal tech company XRef,	StructureFlow was the first automated structure diagramming tool developed for the legal industry, by former Slaughter & May lawyer, Tim Follett, who developed the unique technology to solve a problem he had	Blue J Diagramming is an intelligent diagramming solution built for tax experts. With a user-friendly interface and specialized tools, practitioners are able to create diagrams and organizational charts in minutes, rather than hours. Access 50+ customizable Quick Start templates that include org charts involving	Group View is a structure chart tool for showing companies and shareholder relationships offering speed, efficiency and user-friendliness. Sophisticated charts, even those including minority shareholdings at scale, are created
	<p>which was instrumental in the development of the Litera suite.</p> <p>Jigsaw continues to rapidly develop its product suite which includes timelines, organizational charts and entire presentation decks.</p>	encountered himself in practice.	corporations and partnerships, reorganizations, liquidations, and mergers and acquisitions for a fast diagramming experience.	automatically with just a couple of clicks. No plug-ins and no exporting to drawing tools are required.
Target demographic	Mostly global top 250 law firms and US/UK mid-tier firms.	All law firms, in house corporate legal teams, consulting firms.	Large accounting and law firms, boutique tax and law firms, tax accounting and consulting firms, and governmental departments.	Large multinational corporates with complex shareholdings.
Customer snapshot	Ashurst, Cooley, Dentons, DLA Piper, Freshfields, Fried Frank, Gibson Dunn, Goodwin Procter, Greenberg Traurig LLP, Herbert Smith Freehills, Holland Hart, K&L Gates, King & Wood Mallesons, Mayer Brown, Orrick, Perkins Coie, Proskauer, Ropes & Gray, Simpson Thacher & Bartlett, Travers Smith, Troutman Pepper, Willkie Farr & Gallagher, and over 100 more	Baker McKenzie, A&O Shearman, Norton Rose Fulbright, Slaughter and May, Linklaters, amongst others.	KPMG, RSM, Crowe, UHY, Venable	Ikea
Integrations	Microsoft 365 (PPT, Outlook, Excel, Word, and Visio), iManage, custom API integrations, with more in active development.	iManage and NetDocs integrations coming in 2024.	PowerPoint	

One click creation of entities and relationships between entities	QuickStart in Jigsaw: A “turbo-boost” mode to build diagrams up to 40x faster than using PowerPoint.	Yes, create entities easily and intuitively using ‘Quick Add’ button and unique ‘Quick Build’ mode. These are available all throughout your project, not just at the start.	“Quick Create” makes it efficient to rapidly diagram entities and relationships	No
Customization: ability to change entity shapes and connector lines	Customization is essential for successful adoption of diagramming products – Jigsaw prioritizes being able to mold the product to a firm’s exact requirements or those of a firm’s clients. Jigsaw allows for complete control over the shapes, lines and other elements in diagrams.	Yes – StructureFlow offers the ability to multi-select shapes and change them with one click. Easy click and drag functionality for connector lines, plus custom line pathing so you can attach lines to any point on the edge of an object, control placement and curves of your flow lines and connect multiple lines from a flow or contract line.	Diagrams can be easily customized or changed as the diagram evolves	Shapes Yes. Connector Lines. No.
Ability to select themes and apply branding	Instant application of pre-built branding, logos and color schemes to diagrams. Store multiple themes for quick access to different styles configured for different groups or clients.	Easy formatting panel where you can add your organization colors, themes, and branding. You can also style your entities and objects in your house style!	Users can create and share templates with customized color themes and add firm branding to diagrams.	Yes.

		When exporting to PDF, you can apply custom branded templates		
Ability to store data sitting behind diagrams	Data can be embedded beneath entities, relationship lines and icons; all to be accessed and edited via Jigsaw’s Data Pane.	Embed documents and URLs into your canvas with the ability to edit, and share these edits in real time	Detailed metadata can be entered on every entity and relationship to describe the structure.	Yes.
Filtering by data, e.g. jurisdiction or currency	All data stored in the diagram can be searched and filtered based on ownership, jurisdiction, key personnel or any other properties.	Not currently	Workspaces can be labelled by jurisdiction and searched.	Yes.
Automated creation of steps diagrams (or ability to break chart down into smaller charts)	Jigsaw has robust functionality for the creation of steps papers, which includes extensive text functionality and customized styling. You can easily create perfectly branded presentations, saving tens or hundreds of hours over legacy tools like PowerPoint.	Yes - When you create a Step Sequence in StructureFlow, your diagrams become linked, which means that you can go back to make edits across all steps with a single action and section off areas of the chart into smaller sections for editing and review.	Diagrams can be broken down into steps to describe transactions or changing structures.	Yes.

Ability to automatically transform structured data (e.g. from Excel) into diagrams upon upload	Data can be imported to Jigsaw to automatically build data-rich diagrams. All properties from your data repository can be stored, accessed and manipulated in the diagram.	Multiple import of structured and also unstructured data - including the ability to import Excel, PowerPoint and even text using powered by GenAI.	Ability to create diagrams from structured data on upload is not yet available	Yes.
Ability to export data into Excel	Entity data can be exported as an excel file which can be reimported into Jigsaw after edits have been made.	Not currently	Data can be exported as a PDF report attached to the diagram.	Yes.
Ability to export or "print" to PowerPoint, PDF, etc.	Jigsaw can export to PDF, PowerPoint, Word, Visio, PNG, SVG, and Excel data sheets. Jigsaw structure diagrams export as fully editable, native diagrams in PowerPoint and Visio.	Multiple export options including image, PDF, Word and editable PowerPoint presentation.	Structure charts and step diagrams can be exported to PowerPoint or printed to PDF.	Yes.
Additional data analysis tools	In addition to generalized search and filter features, Jigsaw has special analysis tools to make KYC and other compliance workflows quick and painless.	Comprehensive user data reporting that is included in app for the clients' system admin use and review.	Integration with Blue J's AI-powered tax research and analysis platform is available.	No.

Integration of generative AI	<p>Jigsaw is currently embedding AI into the core of each of its products.</p> <p>These include:</p> <ol style="list-style-type: none"> 1. Creating, editing, analyzing, and adding content to your Jigsaw documents by speaking to an AI 'Jig-bot'. 2. Creating Jigsaw diagrams from diverse data sources. 3. Copy and pasting emails or other information to automate the creation of a corresponding visual structure. 4. Providing instant chat support for product queries. 	Uses OpenAI technology to import easily from text	In development	No.
------------------------------	--	---	----------------	-----

Other signature features	The company has put effort into building strong Customer Success and Client Support teams.	<p>Infinite canvas with no limit on the size of structure on a highly responsive canvas.</p> <p>Fully editable PowerPoint exports</p> <p>Create custom paths for ownership lines; Attach lines to any point on the edge of an object.</p> <p>Version history – easily restore and name versions to compare edits (by user)</p> <p>Quickly draw or group a selection of entities on your diagram (common feature in tax when visualizing a fiscal unity group)</p>	<p>Metadata – capture detailed information on entities and relationships shown in the diagram.</p> <p>Templates – get a head start on your diagramming using one of Blue J's pre-built templates of common structures.</p> <p>Jurisdiction-specific templates, shape stencils, and metadata</p> <p>Collaboration – share structure charts with colleagues</p>	Multiple charts with a single click. Differential charts, which only show changes between two snapshots, taken at different times.
Security	ISO 27001	ISO 27001, SOC 2	SOC 2 https://www.bluej.com/security	

Data Hosting Locations	<p>Jigsaw partners with Microsoft Azure for cloud hosting. Clients can select their desired Azure region during deployment.</p> <p>Jigsaw also offers support for on premise or private cloud deployments.</p>	<p>Multi-tenant SaaS solution hosted in Microsoft Azure data centers with default hosting options based on client location:</p> <ul style="list-style-type: none"> • For US clients: East US / West US • For EU clients: West Europe (Amsterdam) • For UK clients: UK South (London). • For Australian clients: Australia East (New South Wales) • For Canadian clients: Canada Central (Toronto) • For Swiss clients: Switzerland North (Zurich) <p>StructureFlow also offers single-tenant instances and can accommodate self-hosting on client servers which can be hosted anywhere in the world.</p>	Cloud-hosted	Microsoft Azure. Multiple locations available. European Union by default.
------------------------	--	--	--------------	---

Pricing model	Annual subscription	Usage Based Model which includes all features, modules, functionality and a dedicated adoption specialist. No additional costs for extra functionality delivered.	Contact Blue J for more information.	Subscription
Differentiation in market	<p>Jigsaw has a large team numbering 160 employees. Value is provided through a focus on speed and ease-of-use of the products, supporting widespread adoption across various groups within a firm.</p> <p>Jigsaw has also worked to developed a strong after-sales service, offering support worldwide from teams based in London, Miami, Chicago, California, Singapore, and Barcelona.</p>	StructureFlow provides value beyond the initial first draft of a structure diagram. The data import capabilities opens the application up to modelling visually with data. With extensive export/import capabilities and version history, iManage/NetDocs integration and tracking, lawyers can use the application to draft and iterate throughout the full lifecycle of a transaction effortlessly.	<p>Purpose-built for tax experts, with structured metadata.</p> <p>Integration with Blue J's AI-powered tax research and analysis platform is available.</p>	Flexibility.